

# CLOOS

## QIROX WeldExpert COMPACT CELL QR-CC-4

Rising skilled labour shortages and constant pressure to reduce costs are challenging companies to maintain competitiveness in welding production.

With the CLOOS Compact Cell QR-CC-4, you secure an efficient and future-proof entry into automated welding production.



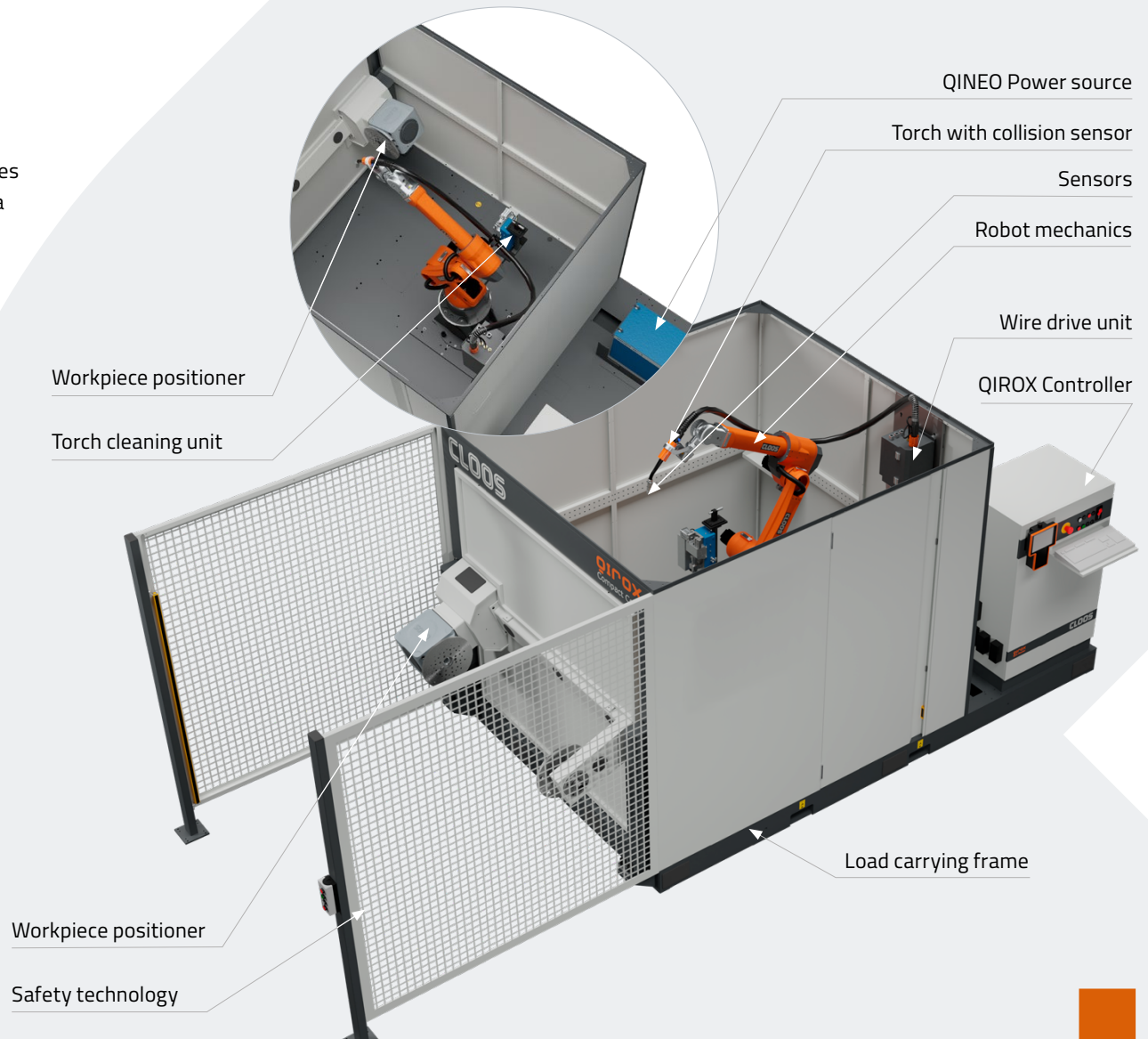
**CONNECT WITH US!**



## COMPACT CELLS BASIC EQUIPMENT

Delivered fully pre-installed and ready to weld, the system combines superior process quality with minimal integration effort, ensuring a rapid payback on your investment.

- > **Compact**  
Easy to integrate, space-saving and easy to transport
- > **Plug-and-Weld**  
Ready to weld and pre-installed, fast setup, easy maintenance
- > **Flexible**  
Modular and expandable for a wide range of applications
- > **High quality**  
Top-level weld seam quality thanks to innovative processes and QINEO technology
- > **Powerful**  
High productivity, short payback time, excellent value for money
- > **User-friendly**  
Intuitive, precise operation for comfortable handling
- > **Reliable**  
"Made in Germany" – proven CLOOS quality from a single source



## COMPACT CELL QR-CC-4 TECHNICAL DATA

Thanks to perfectly synchronized robot and positioner axes, you achieve consistently high-quality welds – even on complex components, every single time.

### Features

- > One rotary positioner with counter bearing per station
- > Cylindric workpieces with a clamping length of up to 2.000 mm
- > Quick station change
- > Easy tool change
- > High rotation speed allows welding of pipes with small radii

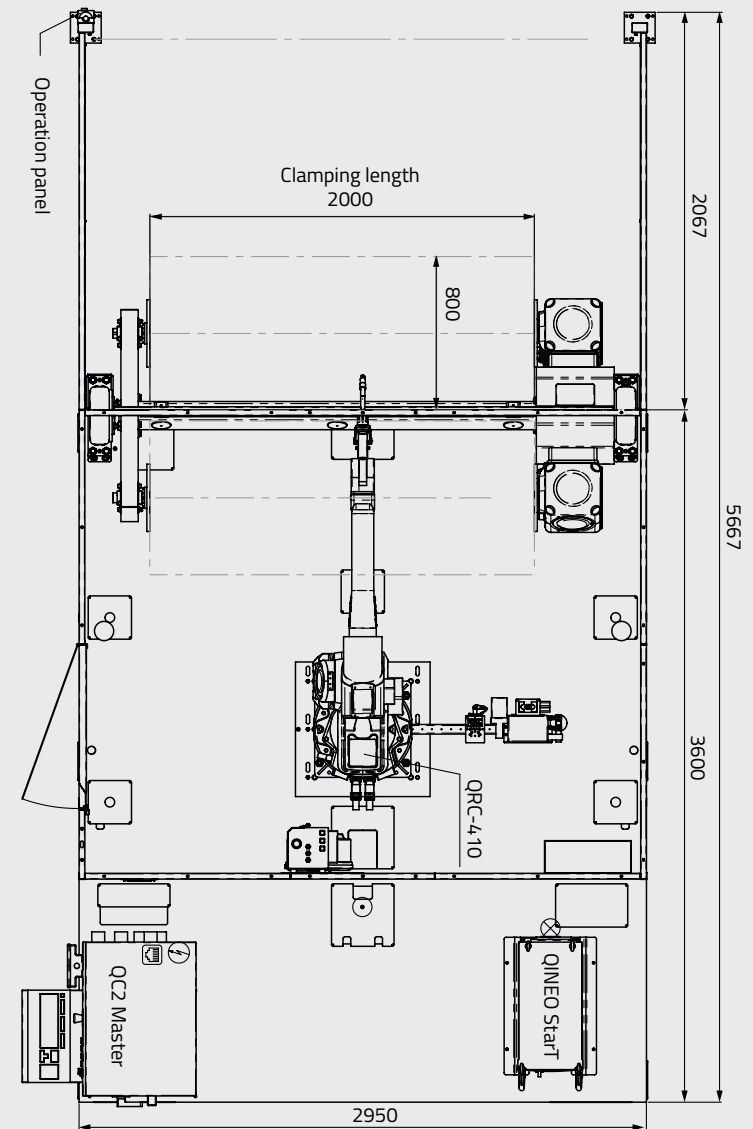
### The QR-CC-4 includes

- > QRC-300 / QRC-410 with QC 2.04 Master
- > QINEO StarT 406
- > Torch cleaning unit
- > Fume extraction hood incl. lighting
- > Industry 4.0 enabled

### Technical data

System floor space	QR-CC-4-2,5 kN
Depth	5.700 mm
Width	2.500 / 2.950 mm *
Height	2.500 mm
Load per station	2,50 kN
Max. component length	1.550 / 2.000 mm *
Max. component diameter	800 mm

\* The width of the floor space depends on the selected maximum component length.



### Dimensions

Compact Cell QR-CC-4 for a component length of 2.000 mm



## QIROX WeldExperT COMPACT CELLS\_ OPTIONS

CLOOS offers a comprehensive package of customised options to further increase the efficiency and range of applications of the QIROX compact cell.

# OPTIONS

- ◇ **Hardware**
  - > Manual operation of workpiece positioning axes
  - > Expansion of digital inputs and outputs
  - > ProfiNet interface
- ◇ **Software**
  - > Transformation of point coordinates
  - > Interpolation of welding parameters on a welding path
  - > Automatic generation of filler and cover layers
  - > Unlimited rotations of the workpiece positioning axes
  - > Parallel Tasking
  - > User management via password
  - > C-Gate: Industry 4.0 solutions
  - > Offline programming system
- ◇ **Sensorics**
  - > Arc sensor
  - > Offline laser sensor
  - > Laser measuring system for welding torch
- ◇ **Welding Technology**
  - > QINEO NexT 452/456 MIG/MAG power source
  - > Weld-Data-Monitoring
  - > QN-WDD-20 Double wire feed system
- ◇ **Torch Cleaning Unit**
  - > Wire cutter
  - > External gas nozzle cleaning



Interested in further options? We look forward to your request.

# CLOOS

CARL CLOOS SCHWEISSTECHNIK GMBH

Head office: Carl-Cloos-Straße 1  
Central warehouse: Carl-Cloos-Straße 6  
35708 Haiger  
Germany

Phone +49 (0) 2773 85-0  
Email [info@cloos.de](mailto:info@cloos.de)  
[www.cloos.de](http://www.cloos.de)



© 2026 Carl Cloos Schweißtechnik GmbH, 01/2026  
Subject to technical alterations.  
> QR4301-QIROX\_WeldExperT\_CC4\_EN